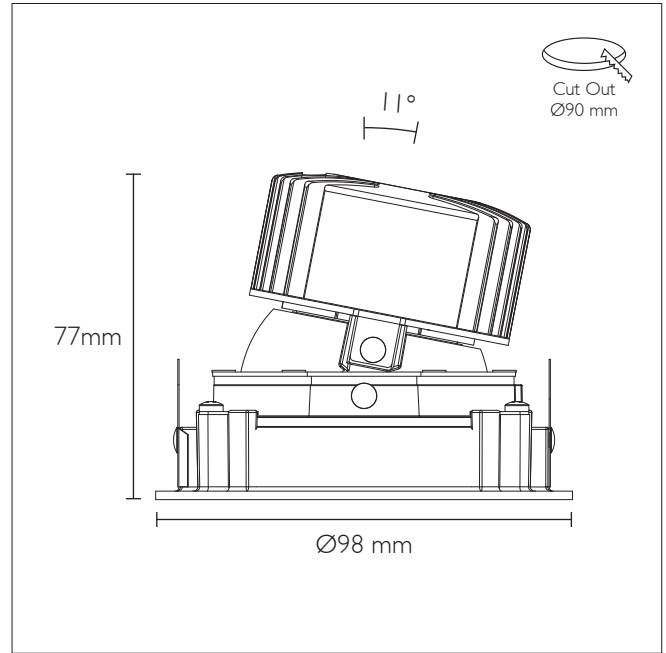
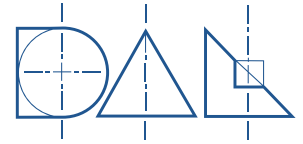


QUINTA 100 ROUND SINGLE

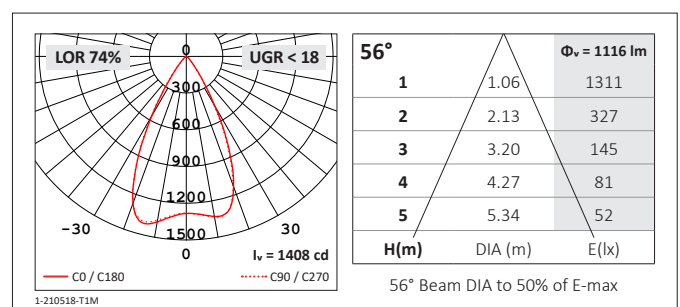
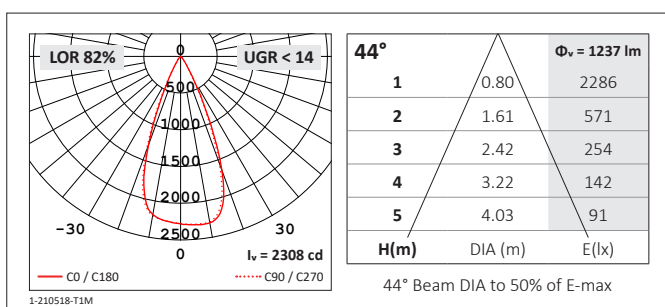
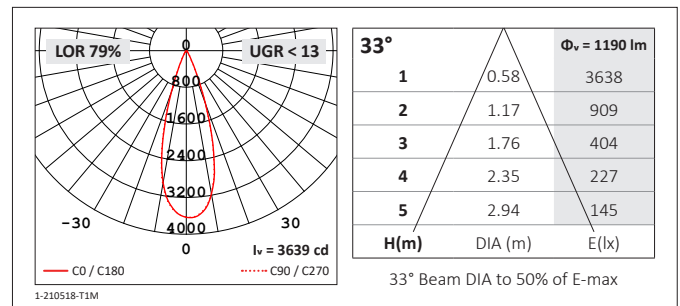
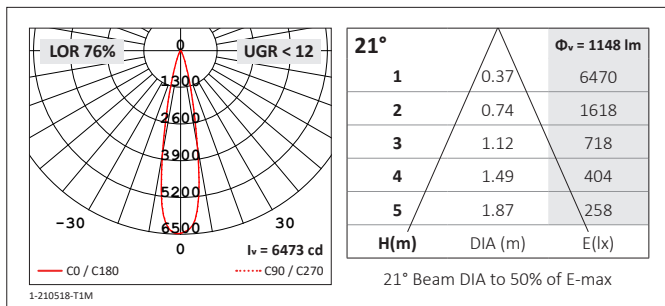


STANDARD MODULE - 21° / 33° / 44° / 56° Beam

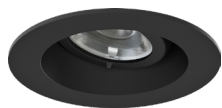
CREE Lighting Engine - CRI 90, 2-Step MacAdam
2700K / 3000K / 4000K

Source Lumens	System Wattage	Delivered Lumens	Efficacy (LOR 76%)	Delivered Lumens	Efficacy (LOR 79%)	Delivered Lumens	Efficacy (LOR 82%)	Delivered Lumen	Efficacy (LOR 74%)
		21°		33°		44°		56°	
1000 lm	9.1 W	760 lm	83 lm/W	790 lm	86 lm/W	820 lm	89 lm/W	740 lm	80 lm/W
1200 lm	11.1 W	912 lm	82 lm/W	948 lm	85 lm/W	984 lm	88 lm/W	888 lm	80 lm/W
1350 lm	13.1 W	1026 lm	78 lm/W	1066 lm	81 lm/W	1107 lm	84 lm/W	999 lm	76 lm/W

Tested with CREE 3000K (System: 13.1 W / 350 mA)



REFLECTOR COLOUR



Black



White

PRODUCT CODING EXAMPLE - G013413J550

Series	Beam	Reflector Colour	Source Lumens	LED	CCT	Driver Protocol	Emergency Protocol
G01 IP20	2 21°	3 Black 4 White	10 1000 lm	J Cree	2 2700K	0 Fixed 1 1-10V 5 DALI 7 Lead / Trail 9 Addressible	0 None E Emergency N Non-maintained
G02 IP44	3 33°		12 1200 lm		3 3000K		
	4 44°		13 1350 lm		5 4000K		
	6 56°						
G01	3	4	13	J	5	5	0

- CRI 98 CREE Lighting engine is available on request
- Trimless version is available on request
- Tolerance range for optical and electrical data shown in this datasheet: ±5%